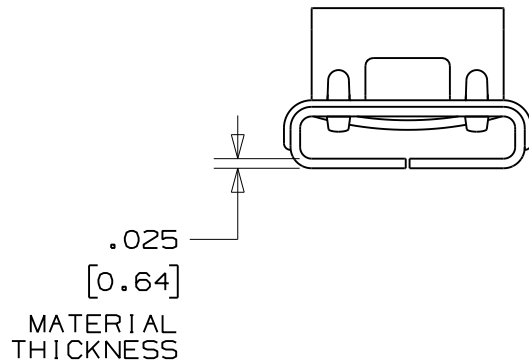
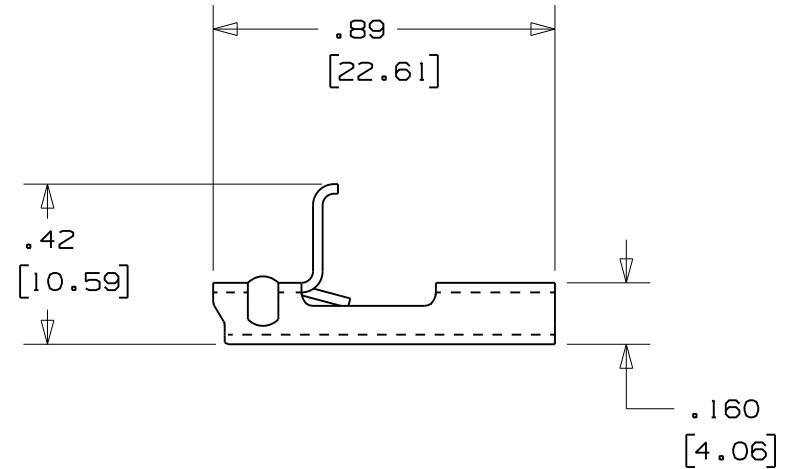
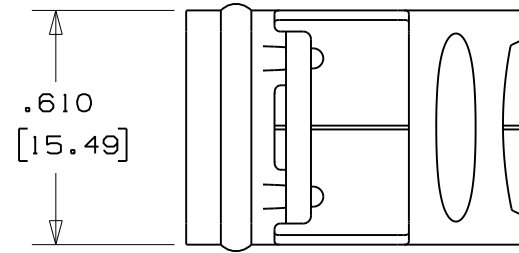


- NOTES: 1. FOR USE WITH PANDUIT MSW50T15-CR4 & MSW50T15-CR6 CONTINUOUS STRAPPING. ^(A)
2. APPLICATION TOOL: BT2MS75, BT2HT
3. DIMENSIONS IN BRACKETS [] ARE IN MILLIMETERS
4. UNLESS OTHERWISE SPECIFIED TOLERANCES ARE:
 .XX = ±.02 [.5]
 .XXX = ±.010 [.25]
5. MATERIAL: 304 OR 316 STAINLESS STEEL



N41148BS_DC/02A

02A	10/08	JAMB	SKB	ORIG CAD FILE SPEC WAS S41148_02 NOTE 2: APPLICATION TOOL BT1HT REPLACED BY BT2HT			 TINLEY PARK, ILLINOIS				
02	10/04	JAMB	EJD	STRAPPING PART NO'S. IN TITLE BLOCK CHANGED TO BUCKLE PART NO'S. DUE TO A TYPING ERROR.				12067 CCH JJB			
01	9/04	JAMB	EJD	VOIDED PART NO'S. MS500X15-TSR & MS500X15-TSR316 & REPLACED BY PART NO'S. MSW50T15-CR4 & MSW50T15-CR6 ON NOTE 1.				12052 CCH JJB			
00	9/03	BRH	EJD	RELEASED				11154 CCH JJB			
REV	DATE	BY	CHK	DESCRIPTION	ECN #	PM	CUST	DRAWN BY BRH	CHK'D EJD	SCALE 2X	DRAWING NO. N41148BS_DC

PANDUIT CORP. TINLEY PARK, ILLINOIS

.500 in [12.70] ENHANCED METAL STRAPPING BUCKLE
 MSBW50-C4 & MSBW50-C6
 CUSTOMER DRAWING